

Homes of the
Top Architects

Will the Gun
Ban Get Nixed?

Inside the New
Baseball Stadium

The Joy of a
Best Friend

Turning Points
in DC's History

WASHINGTONIAN

Go-To
Sushi Spots

Delicious
Comfort
Food

Best
Burgers

Fun for
a Date

117

neighborhood eats

Family-Style
Italian

Old and
Still Good

Satisfying
Breakfasts

Favorite
Dishes at
the Chains

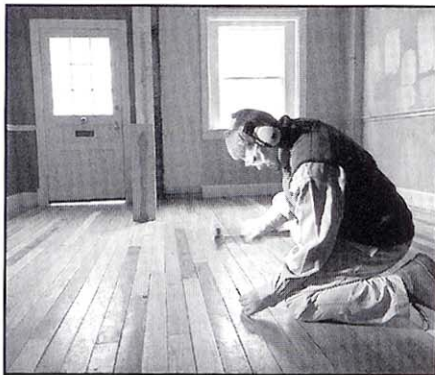


MARCH 2008



\$3.95 washingtonian.com

BRETT HABER, sports director at Channel 9, and wife Jennifer enjoy a casual dinner at Clyde's in Chevy Chase.



Craftsman Restoring Antique Pine Floor

Admiral Hardwood Floors, Inc.

Restoring Refinishing
Installing

www.admiralfloors.com

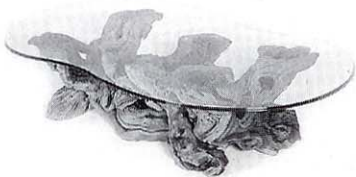
202-339-0777

By Appointment

SierrArts™

Presents
Something Different

*The Elegant,
Century Old
Grapevine Table*



The "Sierra"

Visit our virtual gallery at
www.sierrarts.com

Sketched in a Day and Built on a Budget, Bob Wilkoff's House Stands the Test of Time



Bob Wilkoff's house was avant-garde when he built it in 1979, even for eclectic Cabin John. But the most remarkable thing is that he sketched out the plans in a day and built it on the cheap.

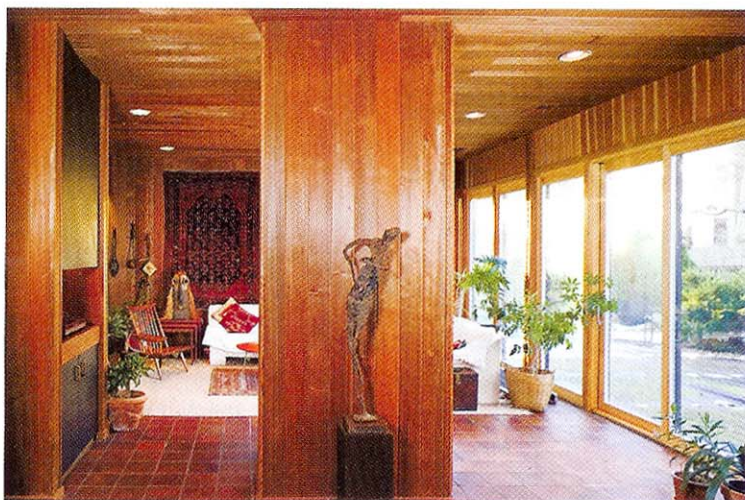
It was the first residence for Wilkoff, who had worked largely on commercial projects and says his only design concept was "saving money." The rich, warm paneling throughout the first floor is made of redwood because Wilkoff got it cheap from a canceled project. An uncle who happened to be a vice president at Benjamin Moore donated the paint.

The floor-to-ceiling panel that acts as a backdrop to a wood stove dividing the living and dining rooms is actually Petrarch, an inexpensive synthetic building material that imitates black slate. The biggest savings was on construction, which Wilkoff did with his wife and father over four years, spending only \$38,000 on the 1,700-square-foot home.

The Wilkoffs do struggle with space constraints. They hadn't anticipated their two daughters when they built the house, and the small lot didn't allow for much more footage anyway. Worse, Wilkoff is a collector. Fortunately, what he collects—beautiful musical instruments—makes for perfect artwork.

The home also served as workspace for Wilkoff and his wife, Martha, who is the office manager for their firm, Archacon. When a second-floor greenhouse was taken out by a tree in a storm, he converted that area to more practical use. The all-white, contemporary 1,000-square-foot office departs considerably from the home's earthiness, but the two float remarkably well together within the cedar exterior. Only the striking spiral staircase is visible through the front windows.

Warm redwood paneling shows off Wilkoff's collection of musical instruments and artwork.





Large windows and a circular skylight splash natural light onto the spiral staircase in the entryway of Bob Wilkoff's Cabin John home.